

# International Technical Ceramics, Inc.



Fiber square coated with ITC-100 HT being torch tested



Metal chip coated with ITC-213 being torch tested



Fiber wall being sprayed with ITC-100 HT



Brick wall being repaired with ITC-200 EZ over ITC-100



Molten metal pump parts coated with ITC-213, 100 HT and 296A



Tundish repaired with ITC-100, 148 and 296A

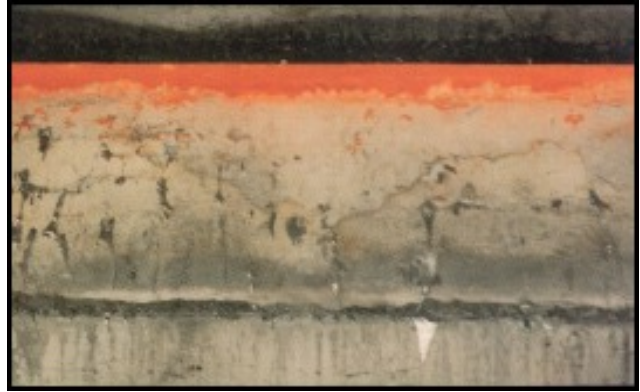
## ENERGY SAVING CERAMIC COATINGS AND FIBER MODULES

ITC Products distributed by **DEMPSEY'S FORGE**, [anvilfire.com](http://anvilfire.com) 336-367-3499

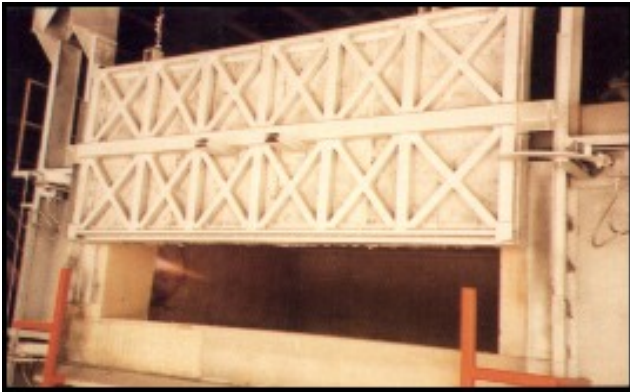
# International Technical Ceramics, Inc.



Plywood hot face coated with ITC-100 HT to enable emergency repairs of furnace door



Door jamb repaired with ITC-100 and 148



ITC Fiber module door newly installed



Furnace interior coated with ITC-100 and 296A



Radian heat tubes, fan, thermocouples and interior coated with ITC products



Tundish repaired with ITC-100, 148 and 296A

**HIGH TEMPERATURE HIGH PERFORMANCE  
ENERGY SAVING CERAMIC COATINGS**

ITC Products distributed by **DEMPSEY'S FORGE**, [anvilfire.com](http://anvilfire.com) 336-367-3499